



ANTI MOSQUITO LED LIGHT

NO MORE SPRAYS, ATOMISERS or SWAT BATS



STOP MOSQUITOES FOR EVER!!!

Insect-resistant

95%



After test, anti-mosquito lamp's effect up to 95.9%
The most recorded for anti mosquito lamp is 97.7%

Energy Saving

1/3

of fluorescent light

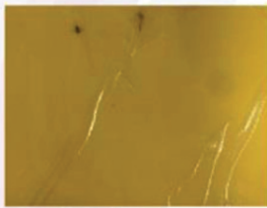
long life span - 50,000 hours

Brightness

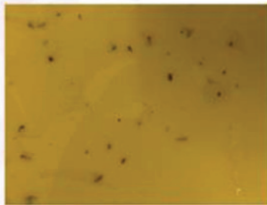
1.3

5meter range of illumination than the average LED

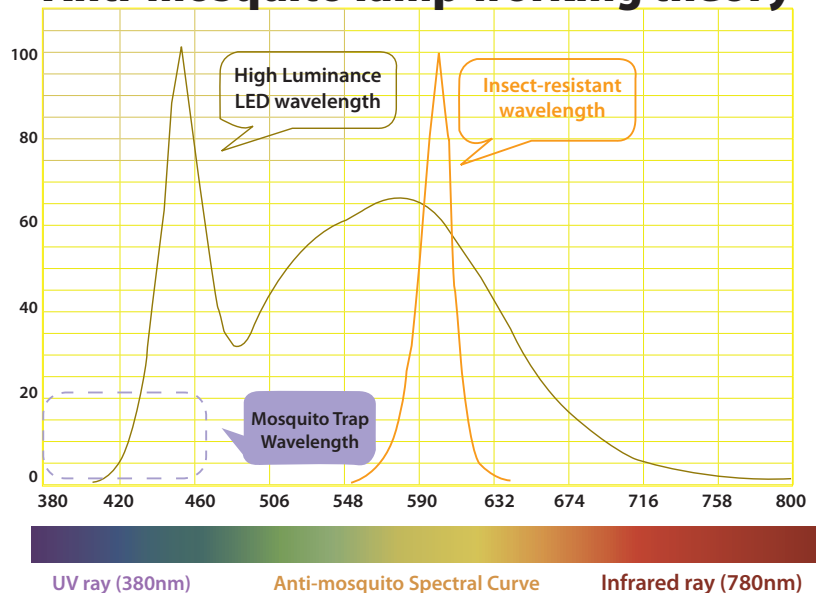
ANTI MOSQUITO LIGHT



NORMAL LED LIGHT



Anti-mosquito lamp working theory



TECHNOLOGY USED: PHOTOAXIS OF MOSQUITOES WHICH HAS THE BIOLOGICAL NATURE TO FAVOUR THE BLUE VIOLET LIGHT BELOW THE 500nm WAVELENGTH AND ARE AFRAID OF YELLOW LIGHT. THIS WAVELENGTH IS BETWEEN 545 - 630 nm

- ✓ 95-97% EFFICIENT IN REPELLING MOSQUITOES
- ✓ ECO FRIENDLY - NOT HARMFUL TO HUMANS
- ✓ ONLY 5 WATTS POWER CONSUMPTION
- ✓ AUSTRALIAN STARNDARDS CERTIFIED -
- ✓ NO HARMFUL BLUE RAY . BLUE RAY RATION <0.1%
- ✓ REPELS HOUSE FLIES AS WELL (follow instructions)
- ✓ 50, 000 HOURS OPERATING LIFE
- ✓ WORKS ON SPECIAL LIGHT FREQUENCY
- ✓ JAPANESE TECHNOLOGY
- ✓ FOR NO HARM TO HUMANS
- ✓ EASY TO INSTALL IN STANDARD LAMP HOLDER

- **Anti mosquito Principle**

According to biological principles, mosquitos are particularly sensitive and attracted to light with specific wavelength. Our researchers based on this principle, through years of researches and trials, have discovered and invented a specific yellow light spectrum which mosquitos dislike and can function as mosquito repellent.

CSE Masterlight anti mosquito light series adopted patented LED Light – emitting material and binary light splitting components to produce a large amount of mosquito repelling ray ranged from 530nm to 590nm.

- **Harmless to human**

Most LED light rays include blue ray (ranged from 445nm – 465nm) which is harmful to human eyes. On the contrary, *CSE Masterlight* anti mosquito light emits ray ranged from 530nm -590nm which is both visible and comfortable to human eyes and at the same time repelling mosquitos away. We strongly recommend our anti mosquito lamp should be installed at the entrance of the house / buildings to prevent mosquitos entering the buildings

- **Efficiency**

By making use of light to repel mosquitos at the same time can also replace normal lighting. This makes the mosquito repellent progress more energy efficient. Also other mosquito repellent methods such as aromatherapy diffuser require refills and replacement which are expensive.

CSE Masterlight LED products have guaranteed life lifespan of 50,000 operating hours, and hence are much more durable and economical.

- **Environmentally Friendly**

Most available LED mosquito repellent lights in the market apply coating on the lamp to filter out rays at wavelength 500nm or below. This not only significantly lowers the brightness and the coatings are usually made from Zinc Sulphide or Cadmium Sulphide pigments that are toxic. *CSE Masterlight* uses a patented light – emitting material and binary light splitting components, can achieve 50% higher brightness and more environmentally friendly and cost and power efficient.

About CSE Masterlight anti mosquito Lamp

Q. What is the effective anti-mosquito range of *CSE Masterlight* ?

A. The effective range of *CSE Masterlight light* ray is around 1 square meter per 1W of light, installed at 2meter height from the floor level. Take the bulb of *CSE Masterlight* for an example, the power is 5 watts and it can cover 5square meters.

Q. How do we install *CSE Masterlight* anti mosquito lamp to attain ideal anti – mosquito environment?

A. The most ideal case to install *CSE Masterlight* all over the house. However, some may not be fond of the yellow ray at indoors. We suggest that *CSE Masterlight* light can be placed in garden, balcony or by the doors to create an invisible ant-mosquito barrier to prevent mosquitos from entering house. Besides, children are more prone to attract mosquitos. Therefore, we recommend installation of *CSE Masterlight* night lamp in children's room to prevent them from mosquitos.

FREQUENTLY ASKED QUESTIONS & ANSWERS

Q. Will our anti mosquito *CSE Masterlight* be affected by other lights when they are turned on at the same time?

A. Yes. Make sure other sources of lights are turned off or they are 4 meters away minimum, when using *CSE Masterlight*, since normal lights contain wavelength which is favourable to mosquitos. It will weaken the effect of *CSE Masterlight* or will not work at all.

Q. How long our anti mosquito **CSE Masterlight** lamp take to be effective?

A. After 15 minutes once the light is turned on,, the mosquitoes concentration would be 50% less. After half an hour, the mosquitoes concentration will be 90% less. The result will be better if you switch on the anti mosquito **CSE Masterlight** for longer time. It takes some times to take effect in the movement of mosquitoes. Mosquitoes will come back at first, but they will escape and repeat several times. The longer anti mosquito **CSE Masterlight** is in use, the less the number of mosquitoes.

Q. Will anti mosquito **CSE Masterlight** be effective outside the light coverage?

A. Anti mosquito **CSE Masterlight** drives away mosquitoes through light wave. The further away from the light, the weaker effect of mosquito repellent. When light intensity is zero, there will be no effect. Ensure there are NO obstacles in way of the light rays, otherwise the obstacles will become a mosquito refuge.

CONTACT: